

DIGITAL ROUTERS

MXD084 **MXD164**

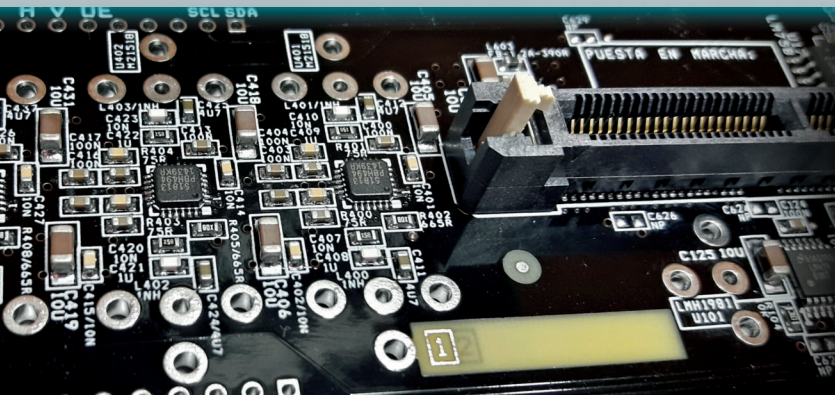
ASI SDI-SD/HD/3G

► Adaptable and functional

Self-contained or remotely managed via
backlit keyboard

► Remotely operable

Can be adapted to suit the operator's needs



MAIN FEATURES

- High-quality digital routers with equalization and re-clocking
- 8 or 16 inputs and 4 duplicate outputs
- Automatic equalization in all 8 or 16 inputs
- Automatic re-clocking in all 4 outputs
- External sync input to switch at vertical interval
- Backlit and ergonomic self-contained or external keyboard, adaptable to suit the operator's needs
- Simple and intuitive operation
- Self-contained multi-voltage switching power supply
- Software controlled via RS232 (DB9) or RS 485, which allows scheduled switching (optional)
- Local manufacturing, support and warranty

Our Digital Routers for ASI and SDI-SD/HD/3G signals are specially designed to perform routing of digital video signals, in compliance with SMPTE 424M, SMPTE 292M, and SMPTE 259M-C standards.

Each router has 8 or 16 inputs and 4 duplicate outputs.

All inputs have automatic equalization, which allows compensation of the losses caused by the passing of high data rate signals through coaxial cables, supporting up to 400 meters of Belden 1694A type cable.

All outputs have automatic re-clocking to recover the original signal clock and re-timing it, thus eliminating the jitter, and offering the highest quality output.

The enclosure has a self-contained switching power supply, and it can be mounted on a rack unit (1U).

The keyboard is backlit and ergonomic for quick reading of the current switching status and for comfortable operation. It may be self-contained or external for remote operation.

The switching status is saved automatically in case of power failure, so that it can be recovered when the power supply is re-established.

Optionally, the router may be controlled via RS232 (DB9) or RS485 through software, in order to make scheduled switching.



MXD084 MXD164

ASI SDI-SD/HD/3G

INPUTS

- Quantity: 8 / 16
- Signal type: ASI, SDI-SD, SDI-HD, or SDI-3G, supporting embedded audio
- Connector: BNC
- Impedance: 75 Ohms

OUTPUTS

- Quantity: 4 duplicated outputs (all positive)
- Connector: BNC
- Impedance: 75 Ohms
- Output signal amplitude: 800 mV +/- 10%
- DC Offset: 0.0 V +/- 0.1 V

FEATURES

- Reclocking Bit-Rate: 270 Mb/s, 1485 Mb/s, 1485/1001 GB/s, 2970 Mb/s, 2970/1001 GB/s, automatic
- Return Loss: >18dB @ 270 MHz, >15dB @ 1485 MHz, >10dB @ 2970 MHz
- Equalization: 0-400m @ 270 MHz, 0-200m @ 1485 MHz, 0-140m @ 2970 MHz (Belden 1694A type cable)
- Rise & Fall Time: 400-700ps @ 270 MHz, <270ps @ 1485 MHz, and <135ps @ 2970 MHz (20%-80% ampl.)
- Overshoot: <10 % amplitude
- Jitter: <0.05UIpp @ 270Mbps, <0.2UIpp @ 1485Mbps, <0.3UIpp @ 2970Mbps
- Propagation Delay: -4ns

ENCLOSURE

1 RACK UNIT

- Voltage: 88-264VAC (47Hz-63Hz)
- Power Supply: Built-in, 25W
- Power Supply Redundancy: No
- Hot Swap Power Supply: No
- Dimensions: 44 x 125 x 485
(H x L x W)
[mm]